

Virginia's National Core Indicators (NCI) Project

Comparison of Virginia Data (FY 2014, 2015, and 2016) with National Data (FY 2015)

Adult Consumer Survey Results

Prepared by:

Partnership for People with Disabilities
Virginia Commonwealth University

October 2016



The Partnership for People with Disabilities is a university center for excellence in developmental disabilities at Virginia Commonwealth University. VCU is an equal opportunity/affirmative action university providing access to education and employment without regard to age, race, color, national origin, gender, religion, sexual orientation, veteran's status, political affiliation, or disability. If alternative formats of this document are needed, please contact the Partnership at (804) 828-3876 or (800) 828-1120 (TTY Relay).



NATIONAL CORE INDICATORS

IN VIRGINIA

This report includes a comparison of information from Virginia data collected in Fiscal Year 2014 (July 1, 2013 - June 30, 2014), Fiscal Year 2015 (July 1 2014 - June 30, 2015), and Fiscal Year 2016 (July 1, 2015 - June 30, 2016) and national data collected in Fiscal Year 2015 (July 1, 2014 - June 30, 2015).

Information in this report is from a sample of adults with intellectual and developmental disabilities (I/DD) who use services from intellectual and developmental disabilities Waivers or who live in state training centers, community ICFs-IID, and nursing facilities.

The information is from the Adult Consumer Survey. The survey has three sections:

- BACKGROUND: completed by support coordinators, case managers, or social workers
- SECTION 1: only the person who uses services can respond
- SECTION 2: the person or a proxy can respond

Virginia participates in the National Core Indicators (NCI) project as part of the state's effort to measure the quality of I/DD services and systems performance.

Questions about this report should be referred to Parthy Dinora
at padinora@vcu.edu

**For more information about
NCI in Virginia,
visit our website at:
www.vcu.edu/partnership/nci**

Virginia's National Core Indicators Project Comparison with National Data

ADULT CONSUMER SURVEY RESULTS

Virginia

National

Descriptive Information

2014	2015	2016		2015
(N=822)	(N=823)	(N=818)		(N=25,820)
45	45	43	AVERAGE AGE	42
57%/43%	55%/45%	56%/44%	MALE / FEMALE	58%/42%
50%	57%	59%	EXCELLENT/GOOD HEALTH	61%
38%	39%	40%	LIMITED/FULL GUARDIANSHIP	44%
57%	48%	53%	MENTAL HEALTH DIAGNOSIS	44%
55%	47%	60%	BEHAVIORAL SUPPORTS	44%

Virginia

National

Disability Indicators

2014	2015	2016		2015
35%	34%	31%	INTELLECTUAL DISABILITY (ID): SEVERE AND PROFOUND LEVELS	28%
12%	14%	11%	MOBILITY: ALWAYS NEEDS ASSISTANCE	11%
32%	32%	27%	EXPRESSION: USES GESTURES, SIGNS, OTHER	27%

OTHER DISABILITIES

Seizures are the most commonly reported "other disability" in Virginia (36% in 2014, 34% in 2015, 35% in 2016) and nationwide (30% in 2015).

Autism and cerebral palsy are reported at approximately the same rate in Virginia and nationwide.

Autism: 19% Autism: 21% Autism: 19%
Cerebral Palsy: 19% Cerebral Palsy: 16% Cerebral Palsy: 17%

Autism: 17%
Cerebral Palsy: 18%

Virginia's National Core Indicators Project Comparison with National Data

ADULT CONSUMER SURVEY RESULTS

Virginia

National

Work in Community

2014

2015

2016

2015

14%

12%

11%

PAID COMMUNITY JOB

14%

\$141

\$162

\$178

AVERAGE INCOME
IN 2 WEEK PERIOD

\$223

26
hours

32
hours

33
hours

AVERAGE TIME WORKED
IN 2 WEEK PERIOD

30
hours

30%

34%

39%

MAKE ABOVE
MINIMUM WAGE

58%

Virginia

National

Choice in Working

2014

2015

2016

2015

44%

19%

45%

28%

51%

35%

Not working, would like to work
Has employment as goal in plan

45%

41%

In Virginia, the percentage of people who want to work and have employment as a goal in their plan has increased each year of the last three years.

Nationally, people who want to work and have employment as a goal are closely aligned.

Other Activities

34%

27%

26%

UNPAID COMMUNITY ACTIVITY

19%

17%

12%

14%

PAID FACILITY BASED

19%

45%

46%

45%

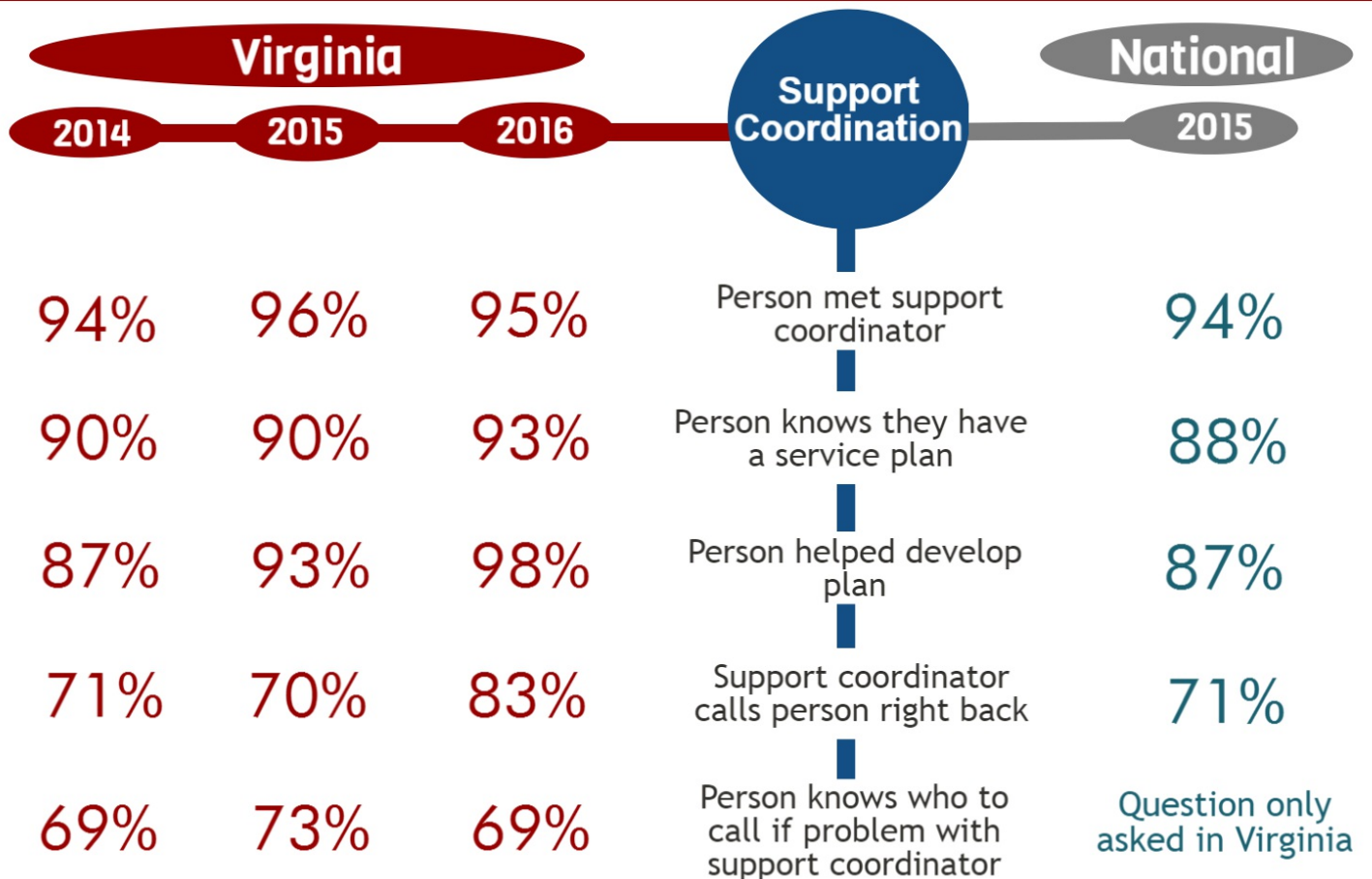
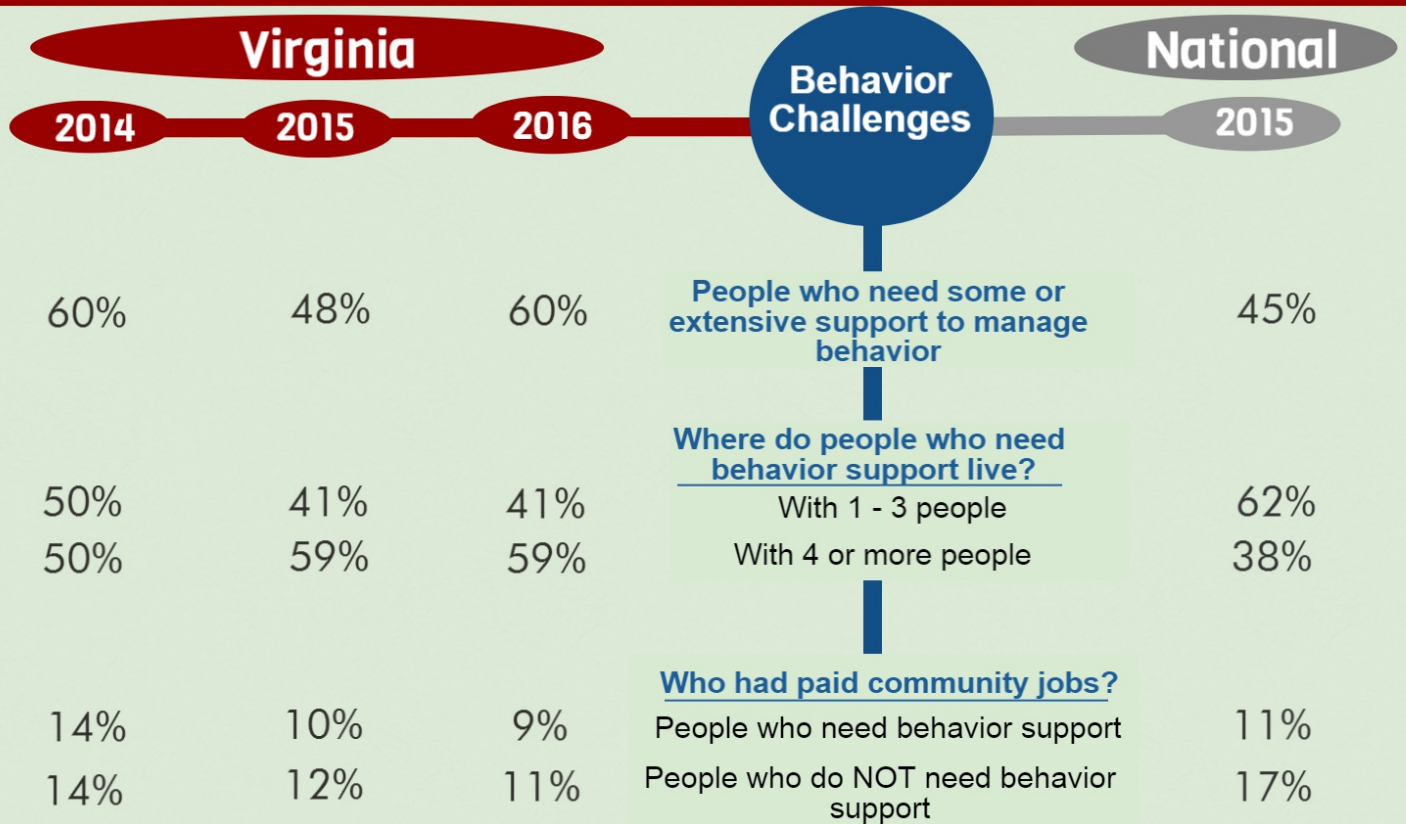
UNPAID FACILITY BASED

42%

(Duplicated Counts)

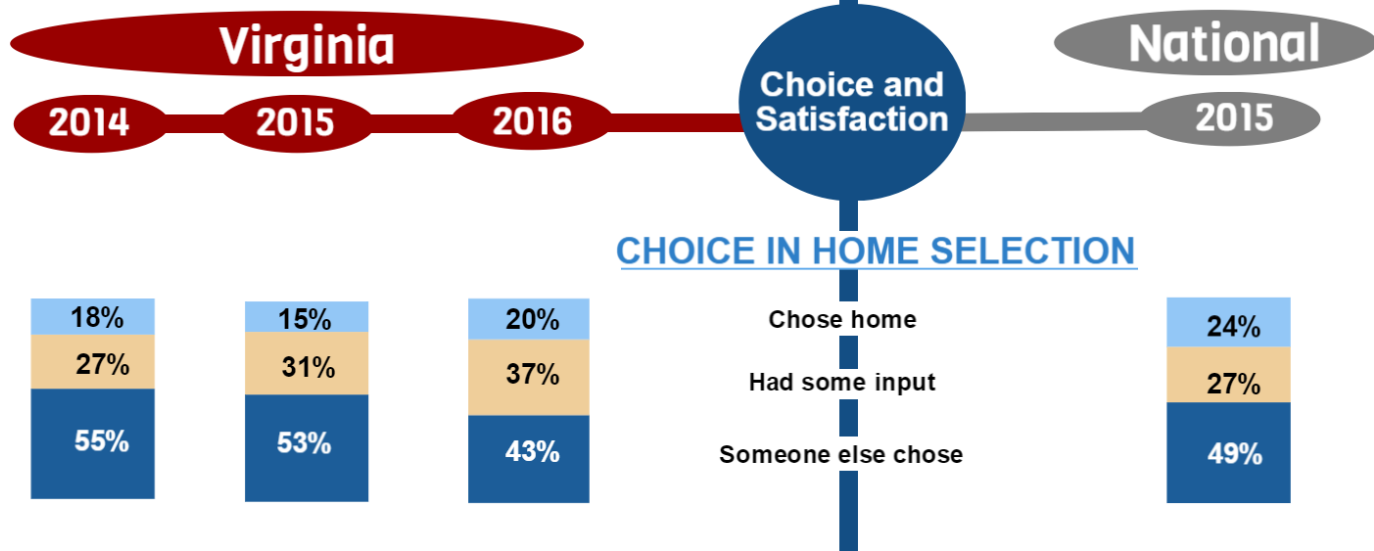
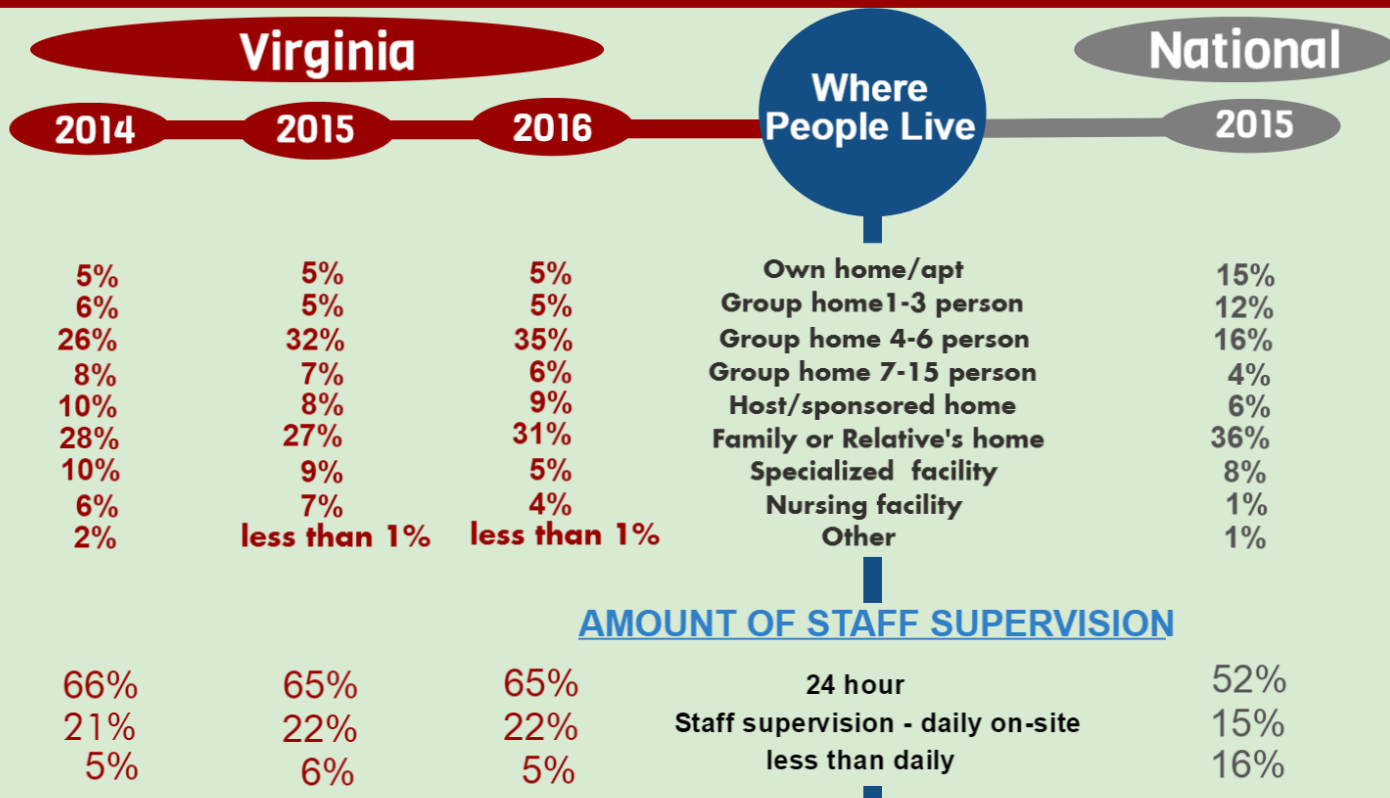
Virginia's National Core Indicators Project Comparison with National Data

ADULT CONSUMER SURVEY RESULTS



Virginia's National Core Indicators Project Comparison with National Data

ADULT CONSUMER SURVEY RESULTS



SATISFACTION WITH LIVING ARRANGEMENTS

In Virginia and nationwide:



- 9 out of 10 people like where they live.
- over 90% of people say they have enough privacy.
- people who live in homes of 3 or less like where they live more than those who live in homes of 4 or more.
- a larger percentage of people living in a parent/relative home said they like where they live compared with those who live elsewhere.
- approximately 1 in every 3 people maybe or definitely would like to live somewhere else.

Notes

Partnership for People with Disabilities
**Virginia Department of Behavioral Health
and Developmental Services**

October 2016